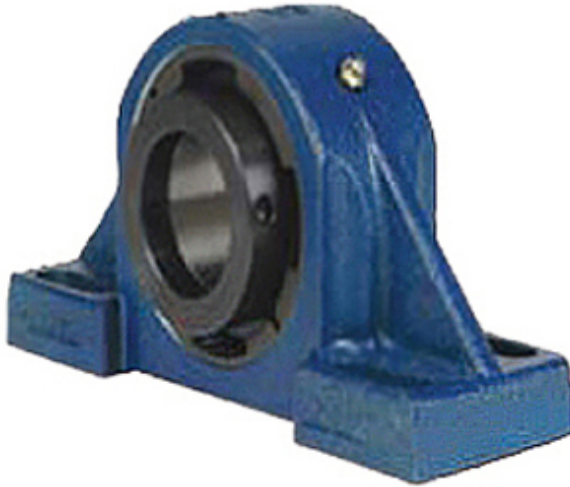




# CEP BEARING COMPANY



4.438 Inch | 112.725 Millimeter x 5.82 Inch |  
 147.828 Millimeter x 6.125 Inch | 155.575  
 Millimeter QM INDUSTRIES QVPK26V407SC  
 Pillow Block Bearings

Bearing No. QVPK26V407SC

QVPK26V407SC Bearing 2D drawings and 3D CAD models

Category	Pillow Block Bearings
Inventory	0.0
Manufacturer Name	TIMKEN
Minimum Buy Quantity	N/A
Weight	57.204
EAN	0883450290272
Product Group	M06288
Number of Mounting Holes	4
Mounting Method	V Lock
Housing Style	4 Bolt Pillow Block
Rolling Element	Spherical Roller Bearing
Housing Material	Cast Steel
Expansion / Non-expansion	Non-expansion
Mounting Bolts	1 Inch
Relubricatable	Yes
Insert Part Number	22226
Seals	Double Lip Viton
Housing Configuration	1 Piece Solid
Inch - Metric	Inch
Other Features	Double Row   Single Nut
Long Description	4 Bolt Pillow Block; 4-7/16" Bore; 6-1/8" Base to Center Height; V Lock Mount; Spherical Roller Bearing; 15-1/4" Minimum Bolt



## CEP BEARING COMPANY

	Spacing; 16-3/4" Bolt Spacing Maximum; Relubricatable;
Category	Pillow Block
UNSPSC	31171511
Harmonized Tariff Code	8483.20.40.80
Noun	Bearing
Keyword String	Pillow Block
Manufacturer URL	<a href="http://www.qmbearings.com">http://www.qmbearings.com</a>
Manufacturer Item Number	QVPK26V407SC
Weight / LBS	126
Bolt Spacing Maximum	16.75 Inch   425.45Millimeter
Actual Bolt Center to Center	0 Inch   0Millimeter
d	4.438 Inch   112.725 Millimeter
B	6.125 Inch   155.575 Millimeter
D	5.82 Inch   147.828 Millimeter
Nominal Bolt Center to Center	16 Inch   406.4 Millimeter
Bolt Spacing Minimum	15.25 Inch   387.35Millimeter