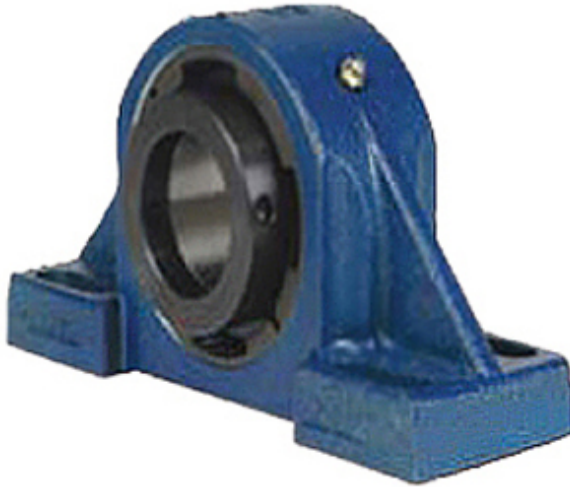




CEP BEARING COMPANY



2.75 Inch | 69.85 Millimeter x 4.74 Inch | 120.396 Millimeter x 3.125 Inch | 79.38 Millimeter QM INDUSTRIES QAAPR15A212ST Pillow Block Bearings

Bearing No. QAAPR15A212ST

QAAPR15A212ST Bearing 2D drawings and 3D CAD models

Category	Pillow Block Bearings
Inventory	0.0
Manufacturer Name	TIMKEN
Minimum Buy Quantity	N/A
Weight	9.988
EAN	0883450321884
Product Group	M06288
Number of Mounting Holes	4
Mounting Method	Concentric Collar
Housing Style	4 Bolt Pillow Block
Rolling Element	Spherical Roller Bearing
Housing Material	Cast Steel
Expansion / Non-expansion	Non-expansion
Mounting Bolts	5/8 Inch
Relubricatable	Yes
Insert Part Number	22215
Seals	Teflon Labyrinth
Housing Configuration	1 Piece Solid
Inch - Metric	Inch
Other Features	Double Row Double Collar With Set Screw
Long Description	4 Bolt Pillow Block; 2-3/4" Bore; 3-1/8" Base to Center Height; Concentric Collar Mount; Spherical Roller



CEP BEARING COMPANY

	Bearing; 8" Minimum Bolt Spacing; 9.6" Bolt Spacing Maximum; Relubricatabl
Category	Pillow Block
UNSPSC	31171511
Harmonized Tariff Code	8483.20.40.80
Noun	Bearing
Keyword String	Pillow Block
Manufacturer URL	http://www.qmbearings.com
Weight / LBS	27
D	4.74 Inch 120.396 Millimeter
Bolt Spacing Maximum	9.6 Inch 243.84Millimeter
Nominal Bolt Center to Center	8.8 Inch 223 Millimeter
B	3.125 Inch 79.38 Millimeter
Bolt Spacing Minimum	8 Inch 203.2Millimeter
d	2.75 Inch 69.85 Millimeter
Actual Bolt Center to Center	0 Inch 0Millimeter