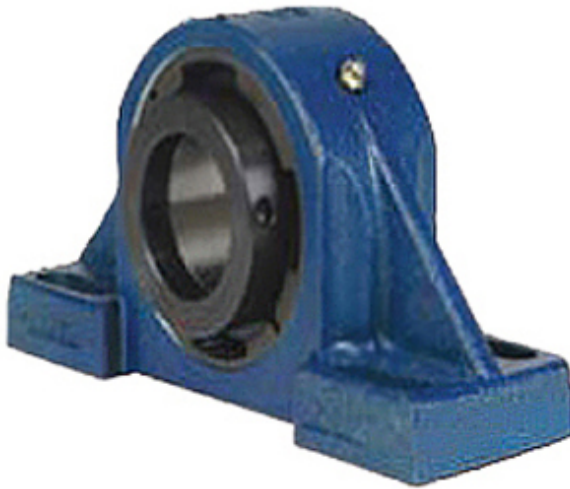




CEP BEARING COMPANY

2.75 Inch | 69.85 Millimeter x 4.74 Inch | 120.396 Millimeter x 3.5 Inch | 88.9 Millimeter QM INDUSTRIES QAAPX15A212SEM Pillow Block Bearings



Bearing No. QAAPX15A212SEM

QAAPX15A212SEM Bearing 2D drawings and 3D CAD models

Category	Pillow Block Bearings
Inventory	0.0
Manufacturer Name	TIMKEN
Minimum Buy Quantity	N/A
Weight	10.442
EAN	0883450008945
Product Group	M06288
Number of Mounting Holes	4
Mounting Method	Concentric Collar
Housing Style	4 Bolt Pillow Block
Rolling Element	Spherical Roller Bearing
Housing Material	Cast Steel
Expansion / Non-expansion	Expansion
Mounting Bolts	3/4 Inch
Relubricatable	Yes
Insert Part Number	22215
Seals	Triple Lip Nitrile Rubber
Housing Configuration	1 Piece Solid
Inch - Metric	Inch
Other Features	Double Row Double Collar With Set Screw
Long Description	4 Bolt Pillow Block; 2-3/4" Bore; 3-1/2" Base to Center Height; Concentric Collar Mount; Spherical Roller



CEP BEARING COMPANY

	Bearing; 9.06" Minimum Bolt Spacing; 10.44" Bolt Spacing Maximum; Relubric
Category	Pillow Block
UNSPSC	31171511
Harmonized Tariff Code	8483.20.40.80
Noun	Bearing
Keyword String	Pillow Block
Manufacturer URL	http://www.qmbearings.com
Manufacturer Item Number	QAAPX15A212SEM
Weight / LBS	45
d	2.75 Inch 69.85 Millimeter
Bolt Spacing Minimum	9.06 Inch 230.124Millimeter
Actual Bolt Center to Center	0 Inch 0Millimeter
Bolt Spacing Maximum	10.44 Inch 265.176Millimeter
D	4.74 Inch 120.396 Millimeter
B	3.5 Inch 88.9 Millimeter
Nominal Bolt Center to Center	9.8 Inch 248.9 Millimeter