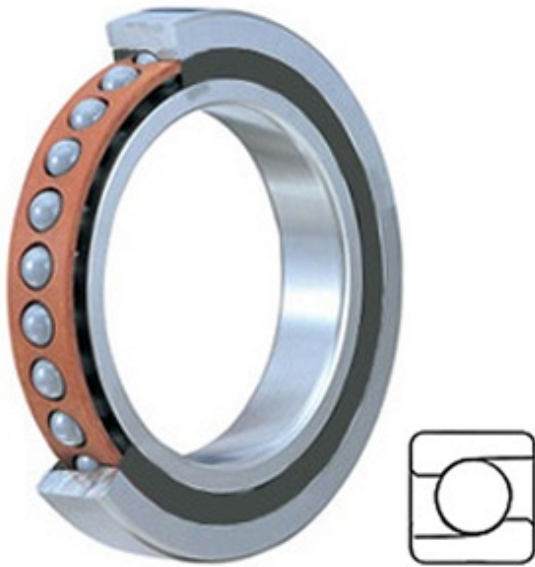




CEP BEARING COMPANY



3MMV9120HXVVSUMFS637 Bearing 2D drawings and 3D CAD models

3.937 Inch | 100 Millimeter x 5.906 Inch | 150 Millimeter x 0.945 Inch | 24 Millimeter TIMKEN 3MMV9120HXVVSUMFS637 Precision Ball Bearings

Bearing No. 3MMV9120HXVVSUMFS637

Category	Precision Ball Bearings
Inventory	0.0
Manufacturer Name	TIMKEN
Minimum Buy Quantity	N/A
Weight	1.288
EAN	0087796264175
Product Group	B04270
Enclosure	2 Seals
Precision Class	ABEC 7 ISO P4
Material - Ball	Steel
Number of Bearings	1 (Single)
Contact Angle	25 Degree
Preload	Medium
Raceway Style	1 Rib Inner Ring and Outer Ring
Cage Material	Phenolic
Rolling Element	Ball Bearing
Enclosure Type	Non Contact Seal
Mounting Arrangement	Universal
Flush Ground	Yes
Inch - Metric	Metric
Other Features	Single Row Angular Contact Super High Precision High Speed Seal
Long Description	100MM Bore; 150MM



CEP BEARING COMPANY

	Outside Diameter; 24MM Width; 2 Seals Enclosure; ABEC 7 ISO P4 Precision; Steel Ball Material; 1 (Single) Bearings; 25 Degree Contact Angle; Phenolic Cage Material; 1 Rib Inner Rin
Category	Precision Ball Bearings
UNSPSC	31171531
Harmonized Tariff Code	8482.10.50.28
Noun	Bearing
Keyword String	Angular Contact Ball
Manufacturer URL	http://www.timken.com
Manufacturer Item Number	3MMV9120HXVVSUMFS 637
Weight / LBS	2.84
D	5.906 Inch 150 Millimeter
B	0.945 Inch 24 Millimeter
d	3.937 Inch 100 Millimeter